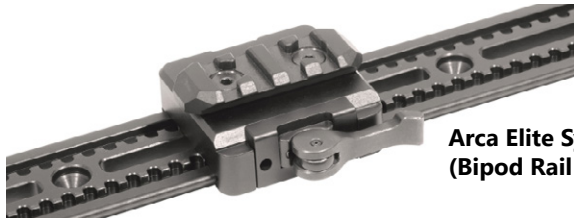


# ARCA ELITE SYSTEM

## FULL KIT



**Arca Elite System Kit  
(Bipod Rail Adaptor)**

#AES-PRK419 (AES Rail M-LOK)  
**CDX-R7 LCP/FCP rifles and Lite/Field Competition chassis**

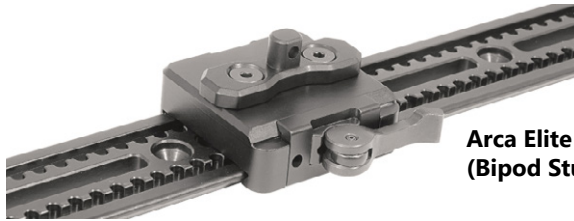
#AES-PRK430 (AES Rail M-LOK)  
**CDX-R7 SHP rifles and Strike Nuke Evo chassis**

#AES-PRK431 (AES Rail 10-32)  
**CDX-R7 CPS, CDX-30/300/33 rifles and Dual/Lite Strike and Field Tactical chassis**

#AES-PRK433 (AES Rail 1/4-28)  
**Dual Strike chassis .50cal (2014 and upper)**

#AES-PRK435 (AES Rail 10-32)  
**CDX-MC Kraken rifles**

#AES-PRK432 (AES Rail 1/4-28)  
**CDX-40 Shadow and CDX-50 Tremor rifles**



**Arca Elite System Kit  
(Bipod Stud Adaptor)**

#AES-BSK419 (AES Rail M-LOK)  
**CDX-R7 LCP/FCP rifles and Lite/Field Competition chassis**

#AES-BSK430 (AES Rail M-LOK)  
**CDX-R7 SHP rifles and Strike Nuke Evo chassis**

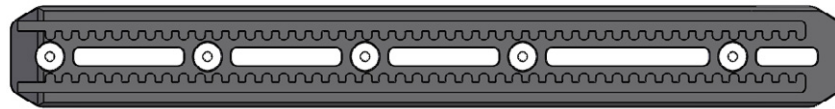
#AES-BSK431 (AES Rail 10-32)  
**CDX-R7 CPS, CDX-30/300/33 rifles and Dual/Lite Strike and Field Tactical chassis**

#AES-BSK433 (AES Rail 1/4-28)  
**Dual Strike chassis .50cal (2014 and upper)**

#AES-BSK435 (AES Rail 10-32)  
**CDX-MC Kraken rifles**

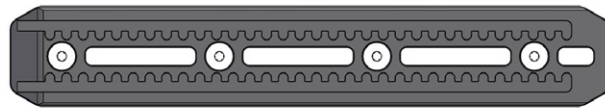
#AES-BSK432 (AES Rail 1/4-28)  
**CDX-40 Shadow and CDX-50 Tremor rifles**

## SEPARATE ITEMS



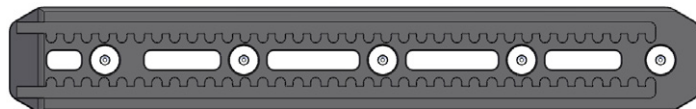
#03127-A419-K1  
**AES Rail (M-LOK)**

**Rifles:** CDX-R7 LCP/FCP Series  
**Chassis:** Lite/Field Competition



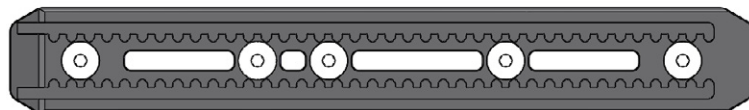
#03127-A430-K1  
**AES Rail (M-LOK)**

**Rifles:** CDX-R7 SHP Series  
**Chassis:** Strike Nuke Evo



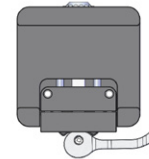
#03127-A431-K1  
**AES Rail (10-32)**

**Rifles:** CDX-R7 CPS, CDX-30/300/33  
**Chassis:** Dual/Lite Strike and Field Tactical



#03127-A432-K1  
**AES Rail (1/4-28)**

**Rifles:** CDX-40 Shadow  
CDX-50 Tremor



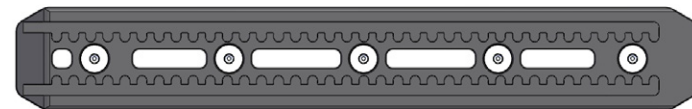
#03127-A417-K1  
**AES Clamp (Quick Detach)**



#03127-A487-K1  
**AES Bipod Stud Adaptor**

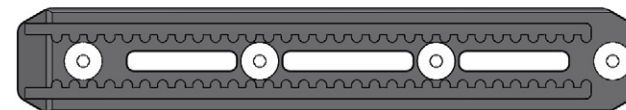


#03127-A488-K1  
**AES Bipod Rail Adaptor**



#03127-A435-K1  
**AES Rail (10-32)**

**Rifle:** CDX-MC Kraken



#03127-A433-K1  
**AES Rail (1/4-28)**

**Chassis:** Dual Strike .50 cal  
Won't fit Dual Strike prior 2014

